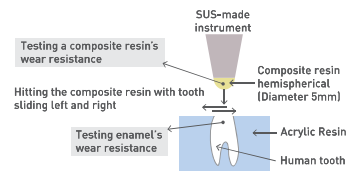
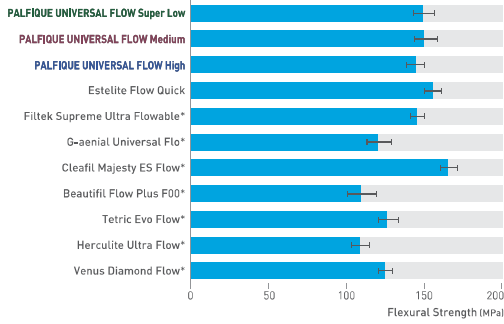


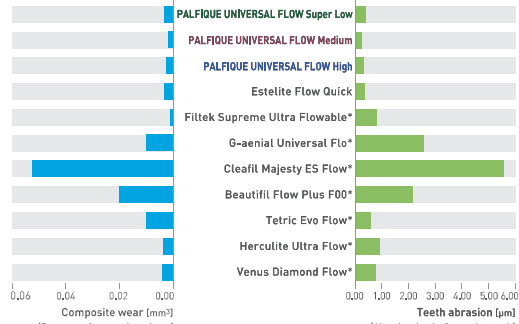
Excellent physical properties



Flexural Strength



Wear resistance



* Not a registered trademark of Tokuyama Dental Corporation

Product Packages Available

PALFIQUE UNIVERSAL FLOW - Resin-based Dental Restorative Material -

Super Low L-SYR
Contents: 1-1,8ml (3,0g) syringe, 10-tips
Available in 6 shades: A1, A2, A3, A3.5, A4, A5

Medium L-SYR
Contents: 1-1,8ml (3,0g) syringe, 10-tips
Medium SYRINGE
Contents: 1-1,4ml (1,7g) syringe, 6-tips
Available in 12 shades: CE, BW, A1, A2, A3, A3.5, A4, A5, B3, OPA2, OPA3, OPA4

High L-SYR
Contents: 1-1,8ml (3,0g) syringe, 10-tips
Available in 7 shades: A1, A2, A3, A3.5, OPA2, OPA3, OPA4

Accessory - TOKUYAMA Dispensing Tip / Contents: 50-tips - TOKUYAMA Plastic Tip / Contents: 50-tips - PALFIQUE UNIVERSAL FLOW Shade Guide

Related Product

PALFIQUE UNIVERSAL BOND - Self-cured Dental Universal Adhesive -

KIT
- PALFIQUE UNIVERSAL BOND BOND A / 5mL x 1
- PALFIQUE UNIVERSAL BOND BOND B / 5mL x 1
- Disposable Applicator (Fine) x 25
- Mixing Well x 1
- Disposable Mixing Well x 5

Refill
- PALFIQUE UNIVERSAL BOND BOND A / 5mL
- PALFIQUE UNIVERSAL BOND BOND B / 5mL
- Disposable Mixing Well / 50

Specifications are subject to change without notice based on Manufacturers discretion.

Manufactured by

Tokuyama Dental Corporation

38-9, Taitou 1-chome, Taitou-ku, Tokyo 110-0016, Japan

TEL: +81-3-3835-2261 FAX: +81-3-3835-2265

Email: export-2@tokuyama-dental.co.jp

URL: www.tokuyama-dental.com



PALFIQUE UNIVERSAL FLOW

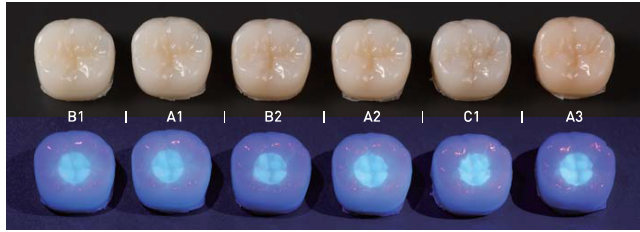
RESIN-BASED DENTAL RESTORATIVE MATERIAL



Excellent esthetics

Wide and natural color matching

PALFIQUE UNIVERSAL FLOW is basically designed to make it possible that most cases can be restored by limited mono shade through its excellent shade matching/color blending effect.

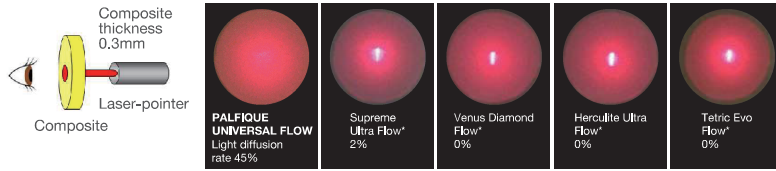


The color compatibility of PALFIQUE UNIVERSAL FLOW A2 shade when it is filled in each artificial tooth (B1, A1, B2, A2, C1, A3) after creating a cavity 4 mm in diameter and 2 mm deep. By using black light, we can see the fluorescence of PALFIQUE UNIVERSAL FLOW where it was filled.



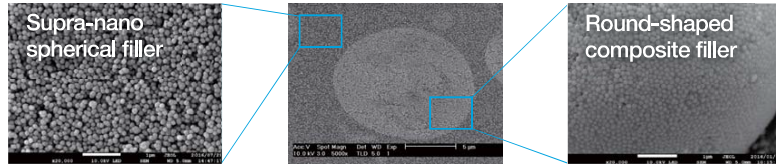
High Light Diffusion

PALFIQUE UNIVERSAL FLOW has the highest light diffusion by laser-transmission test. It can be possible in clinical to achieve wide color matching and the invisible margin.



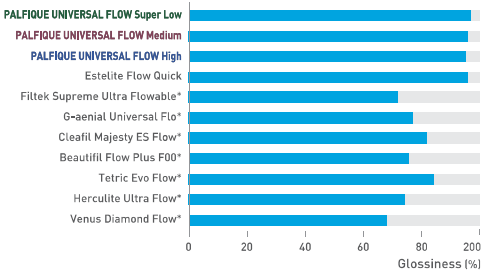
Filler components

Supra-nano spherical filler (200nm, silica-zirconia filler) and round shaped composite filler (include supra-nano spherical filler) are used as filler of PALFIQUE UNIVERSAL FLOW. The adoption of both filler can be contributes to the esthetic properties (wide color matching, excellent polishability) and the handling properties (easy extrusion, non-sticky).



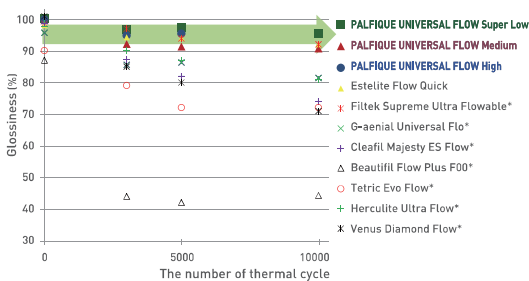
Polishability

Glossiness measured by polishing in 60 seconds with Sof-Lex™ Superfine.



Gloss retention

Thermal cycle test (5°C/55°C)



* Not a registered trademark of Tokuyama Dental Corporation

Three flowability options and excellent handling

Super Low	Medium	High
<p>Non slumping Non running Precision stacking</p>	<p>High versatility Less slumping Less running</p>	<p>Easy placement Flow well</p>
<p>Flowability</p> <p>Horizontal ※1 Vertical ※2</p>	<p>Flowability</p> <p>Horizontal ※1 Vertical ※2</p>	<p>Flowability</p> <p>Horizontal ※1 Vertical ※2</p>
<p>Recommended Cavities</p> <p>Class I Class II Class III Class IV</p>	<p>Recommended Cavities</p> <p>Class I Class II Class III Class IV Incisal Margin Deep Class V Shallow Class V Wedge-shaped defects Small Cavity</p>	<p>Recommended Cavities</p> <p>Shallow Class V Small Cavity Cavity Liner</p>
Dr. Miyazaki	Dr. Tashiro	Dr. Miyazaki
<p>Preparation</p>	<p>Preoperation</p>	<p>Preoperation</p>
<p>Placement of PALFIQUE UNIVERSAL FLOW (Super Low A2)</p>	<p>Placement of PALFIQUE UNIVERSAL FLOW (High OPA2 + Medium CE)</p>	<p>Placement of PALFIQUE UNIVERSAL FLOW (High OPA2 + Medium CE)</p>
<p>Final Restoration</p>	<p>Final Restoration</p>	<p>Final Restoration</p>
<p>6 shades</p> <p>A1 A2 A3 A3.5 A4 A5</p>	<p>12 shades</p> <p>CE BW A1 A2 A3 A3.5 A4 A5 B3 OPA2 OPA3 OPA4</p>	<p>7 shades</p> <p>A1 A2 A3 A3.5 OPA2 OPA3 OPA4</p>

※1) 0.1g 37°C stand for 2 minutes (horizontal) ※2) 0.03g 37°C stand for 1 minute (vertical)